

STOCK
M SERIES

דינור

DESIGN PARK

www.dinodesignpark.com
[@dinodesignpark](https://www.instagram.com/dinodesignpark)

Dino Design Park is a company founded with the aim of producing design elements.

Driven by a strong spirit of innovation and influenced by the rich tradition of Emilia Romagna, it combines the study of cuttingedge technologies with artisanal expertise, crafting unique solutions that embody quality, elegance, and functionality. Designing starting from an insatiable pursuit of beauty and functionality is the goal behind our work.

STOCK™

drive your life





*Photos are for illustration only.
Actual technical specification will depend on the type of vehicle.

MODULAR SYSTEM

STOCK is the new universal modular system, designed to offer maximum flexibility and adaptability to your car. It allows you to organize and set up the trunk in a neat and multifunctional way.

Each module is compact, lightweight, and easy to transport, perfect for those who love adventure without compromising on comfort.



UNIVERSAL DESIGN

Thanks to a lateral extension system of the M2 module and a vertical adjustment of all modules, Stock adapts to most vehicles.



*Photos are for illustration only.
Actual technical specification will depend on the type of vehicle.

COMPOSITION 4 MODULES

The modules can be easily configured in different ways. This allows for optimizing space based on needs, such as increasing cargo capacity for a trip or creating more space for everyday use. They can be purchased separately.

| M1
COOKING



| M2
WATER AND PREPARATION



| M3
STORAGE



| M4
COOLER BAG




 Ministero delle Imprese e del Made in Italy
 registered 402024000001438

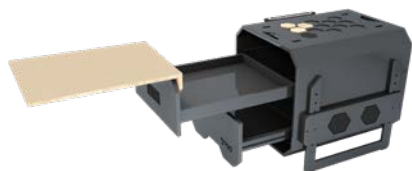

 EUIPO
 registered N°015079027-0001

*Photos are for illustration only.
Actual technical specification will depend on the type of vehicle.

STOCK M1™

L 420 mm
H 380 mm
P 480 mm

13.8 kg



COOKING MODULE

M1 is the module designed for preparation, cooking, and storage of tableware and other objects. It is equipped with:

A Campingaz Bistro 3 gray/chrome gas stove with an integrated cylinder, which is not fixed and can also be used outside the module.

Double storage drawer for utensils and accessories. An additional countertop to extend the working surface.

A wooden top with protective elements.

A metal surface for magnetic accessories.

Adjustable feet for height customization.

Designed to be functional and flexible, M1 adapts to different needs while providing, efficiency and practicality.

PLUS | ADVANTAGES



*Photos are for illustration only.
Actual technical specification will depend on the type of vehicle.

STOCK M2™

L 440>690mm
H 380 mm
P 480 mm

14.9 kg



Extendable compartment
0 < 250 mm

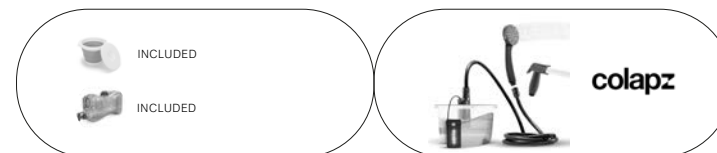


PREPARATION AND WASHING MODULE

M2 designed for food preparation and washing, with an extendable dedicated storage area for objects. It includes:

- A 5L food-grade water tank for clean water supply.
 - A Colpaz showerhead with faucet and remote control, adjustable with a rechargeable battery.
 - An extendable sink with water containment.
 - A solid oak cutting board for food prep.
 - A wooden top with protective elements.
 - A metal surface for magnetic accessories.
 - Adjustable feet for height customization.
- M2 combines practicality and versatility, ensuring you an efficient and organized workspace.

PLUS | ADVANTAGES



*Photos are for illustration only.
Actual technical specification will depend on the type of vehicle.

STOCK M3™

L 420 mm
H 380 mm
P 480 mm

13.8 kg



STORAGE MODULE (FOR EVERYTHING YOU NEED)

M3 is designed to store everything you want to take with you. It features the following elements:
 A removable storage compartment with adjustable internal dividers for customized organization.
 A wooden top with protective elements.
 A metal surface for magnetic accessories.
 Adjustable feet for height customization.
 M3 offers flexibility and convenience, keeping your essentials organized and easily accessible.

PLUS | ADVANTAGES



*Photos are for illustration only.
Actual technical specification will depend on the type of vehicle.

STOCK M4™

L 420 mm
H 380 mm
P 480 mm

10.8 kg



FOOD STORAGE MODULE

M4 is the ideal module for storing and preserving food, ensuring freshness and practicality in any situation. It is equipped with a thermal bag, designed to keep food and beverages at the desired temperature for extended periods.

For added convenience, M4 includes a sliding shelf, allowing for easy access and optimal organization of stored items. The adjustable feet ensure stability on different surfaces, making it adaptable to various environments.

With its thoughtful design and functionality, M4 is the perfect companion for keeping your ingredients fresh and within reach, whether you're on the go or setting up a temporary kitchen space.

PLUS | ADVANTAGES



*Photos are for illustration only.
Actual technical specification will depend on the type of vehicle.



Why STOCK is the best solution for you?

STOCK is the best solution for single looking for practicality, versatility, and style in one product. It is a compact and universal camping box, suitable for all vehicles, easy to store, and quick to set up during stops.

- Modular and customizable – Choose and combine the modules as you like, side by side or by stacking them, based on your needs to your needs.
- Natural and safe – Made entirely of wood, it is an eco-friendly and safe product.
- Lightweight and practical – less than 15 kg per module, it is easy to carry and handle.
- Compact but spacious – Small on the outside, big on the inside, it offers plenty of storage space without occupying too much space.
- Exclusive design – Its unique style transforms your vehicle into an elegant setup, combining functionality and aesthetics.

With **STOCK**, organizing your travel space has never been this simple and stylish. Freedom, practicality, and design, are always with you!

sustainable product



PRODUCTION

A Sustainable, Natural, and Recyclable Product

Made entirely from natural wood, our product embodies sustainability and environmental responsibility. The materials used come from responsible sources and are fully recyclable, helping to reduce environmental impact and promote a circular economy.

At Dino Design Park, we implement policies aimed at energy conservation and the responsible use of resources, ensuring a production process that protects nature without compromising on quality and design. Choosing our products means making an eco-friendly choice without sacrificing aesthetics or functionality.

Sustainability and design can go hand in hand. Discover our collection!

Let me know if you'd like any adjustments!

THANK YOU



DINO DESIGN PARK srl

PHONE | **+39 347 1721001**

MAIL | **info@dinodesignpark.com**

WEB | **dinodesignpark.com** | **@dinodesignpark**

ADDRESS | **via Enrico Berlinguer 4 - Bibbiano - Reggio Emilia - Italy**

Tutto ciò che è riportato su di questo documento, contenuti, testi, immagini, il logo, il lavoro artistico e la grafica sono di proprietà della nostra società, sono protetti dal diritto d'autore nonché dal diritto di proprietà intellettuale. Sarà quindi assolutamente vietato copiare, appropriarsi, ridistribuire, riprodurre qualsiasi frase, contenuto o immagine presente su di questo sito perchè frutto del lavoro e dell'intelletto dell'autore stesso

È vietata la copia e la riproduzione dei contenuti e immagini in qualsiasi forma.

È vietata la redistribuzione e la pubblicazione dei contenuti e immagini non autorizzata espressamente dall'autore.

Copyright © 2024 · Dino Design Park. · all rights reserved.